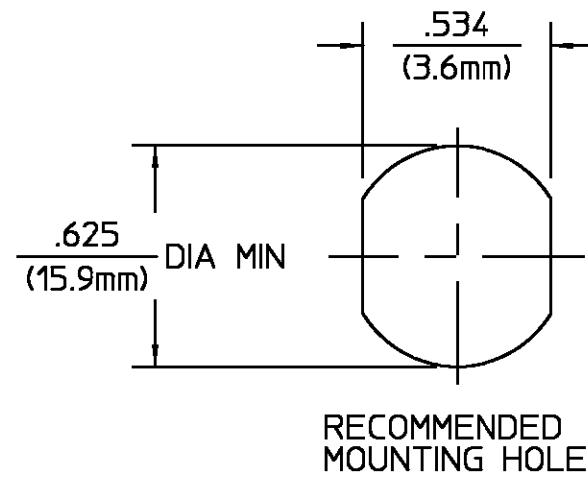
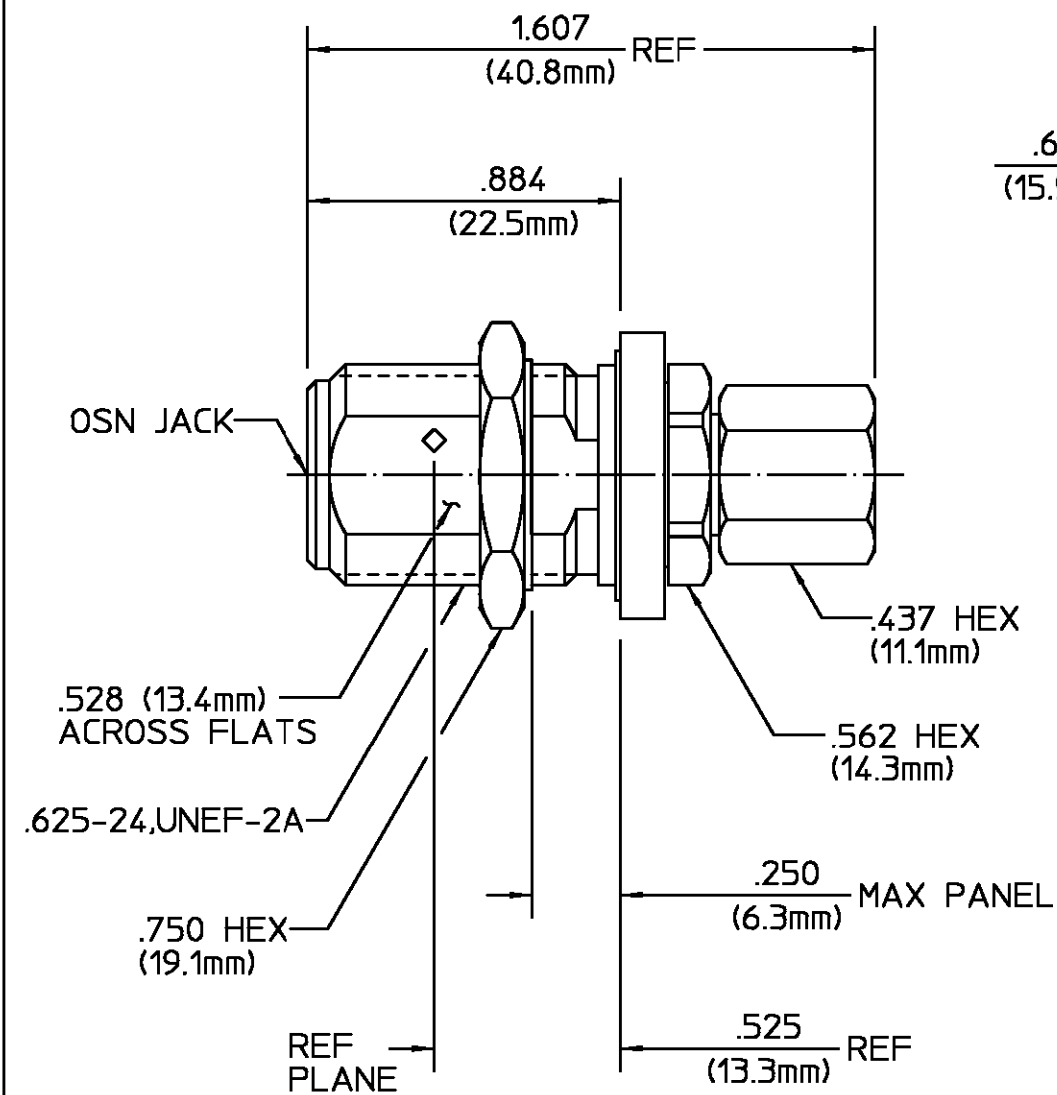


REVISIONS			
REV	DESCRIPTION	DATE	APPROVED
01 ₀	RELEASED	6-28-89	S.T.M.



COMPONENT	MATERIAL	FINISH
HOUSING CLAMP NUT MOUNTING NUT LOCKWASHER	STAINLESS STEEL PER ASTM-A484 AND ASTM- A582, TYPE 303	PASSIVATE PER ASTM-A380
DIELECTRIC	TFE FLUOROCARBON PER ASTM-D-1457, MIL-P-19468, AND FED. SPEC L-P-403	N/A
CENTER CONTACT BUSHING	BERYLLIUM COPPER PER QQ-C-530, ALLOY 173	GOLD PLATE PER MIL-G-45204 OVER COPPER PLATE PER MIL-C-14550
GASKET O-RING	SILICONE RUBBER PER ZZ-R-765	N/A

NOTES:

- DESIGNED FOR USE WITH
.250 DIA SEMI-RIGID CABLE.

CABLE ENTRY DIAMETER MINIMUM		UNLESS OTHERWISE SPECIFIED DIMENSIONS ARE IN INCHES TOLERANCE ON			DRAWN BY L.ROSS		DATE 6-28-89		AMP Incorporated	
CONTACT	.065	FRAC.	DEC.	ANGLES	CHECKED BY C.W.	6-28-89	140 Fourth Avenue Waltham, MA 02451-7599		TITLE OSN BULKHEAD FEEDTHROUGH CABLE JACK-COMPRESSION CLAMP ATTACHMENT	
		± 1/64	± .005	± °	APPD BY S.T.M.	6-28-89	AMP		NO. AP. 408-04898 (30-024)	USE ASS'Y PROCEDURE
							SIZE B	CODE IDENT NO. 26805	3004-7750-02	REV 01 ₀
							SCALE 2:1			SHEET 1 OF 1